

Exploring the Shoreline

Whether rock pools, strandline or dunes you'll find lots to make your visit fun. A few things to remember before you get started however:

- Rock pools are fun but the rocks are sharp and slippery - please wear suitable shoes at all times and be careful. Cuts and breaks might spoil your fun.
- When exploring rock pools or the intertidal (wet) area it's best to follow the tide out - you get longer and there's no danger of the water cutting you off. Keep an eye out for the tide coming in again though!
- Be careful of sharp objects in the weed
- You'll find different creatures at different parts of the beach, depending on how hardy they are to changing water conditions. Can you spot the changes?
- The strandline is worth exploring at any tide - look out for the unusual.
- Special equipment isn't needed, you can look with just hands and eyes but you'll see more if prepared with simple equipment.

Materials

Dip Net
White tray or bucket

Methods

1. Rockpooling - you don't need any special equipment, although a net will be helpful. Go slowly, if you jump about in the water everything will hide but if you're careful you'll find lots of things. Carefully turn stones and see what's hiding under them - but be sure to put them back in the same place. Different parts of the rocky shore are exposed for different times. This means that you'll find different animals and plants as you move down towards the sea, with the more sensitive species nearer the sea where they have less time uncovered.
2. Strandline - the trash line at the top of the tide, usually a line of seaweeds. Look carefully in this area, moving the seaweed and looking under it. You'll find animals but also things that have been brought in on the tide—sometimes from the other side of the world!
3. Intertidal - the sand that gets covered and exposed by the tide. You might have to dig here, but will see things on the surface as well. Try wading in the shallow water - have you disturbed any fish?



Periwinkle



Dog whelk
(with a groove in the mantle)



Beadlet anemone
(feeding)



Brown shrimp
(with limpet)



Blenny



Barnacles



Top shell

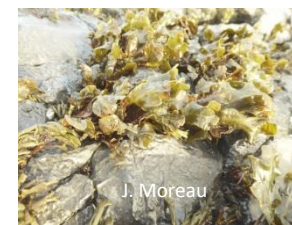


Sea potato



Shore crab

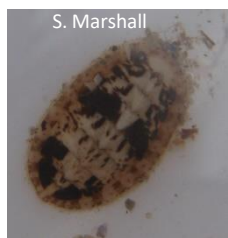




Channelled wrack

Starfish

Spiral wrack



Chiton

Kelp holdfast
(can you see any animals in there?)

Butterfish



Egg wrack

Mermaids purse
(egg case of the spotted ray. Can you find different ones?)

Bladder wrack